



POLISHED CONCRETE OVERLAYMENTS

TRU® INNOVATION
THE PROVEN SOLUTION





POLISHING YOUR VISION TO MAKE IT REALITY

The Rapid Set® TRU® Flooring System is designed for beautiful, versatile, and durable results. Whether you have a commercial, industrial, residential, or other facility, TRU offers a limitless range of architectural and decorative finishes that bring your vision to life.

Architects, contractors, and owners trust us to guide them through the entire flooring process. That's because we've been working closely with leading manufacturers of grinding equipment, chemicals, and mixing equipment on architectural concrete floors since 2005.

Specifying and installing the TRU Flooring System comes with CTS Cement Manufacturing Corporation's award-winning customer support. As a service-driven company, our flooring specialists are with you every step of the way. We work with you to specify the correct products and train your team to properly install the TRU Flooring System. We strive to deliver a seamless experience.

A background image of a retail store interior. On the left, there are racks of clothing, including jeans. On the right, there is a display with more clothing and a sign that says "TOPS". The floor is highly reflective, showing the store's interior and the text of the advertisement. A semi-transparent white box with red corner accents contains the main text of the advertisement.

TRUSTED BY AGENCIES AND COMPANIES WORLDWIDE

CTS has been supporting the design and construction communities, and Federal, State and public agencies since the 1960s with Rapid Set® rapid-hardening cement products and Komponent® Type K shrinkage-compensating concrete products. Our products have been used on landmarks such as the Hoover Dam Bypass, the Pentagon, the Lincoln Tunnel, the San Francisco-Oakland Bay Bridge, and major roadways, airports, commercial and industrial projects worldwide.

Loyal agencies and companies such as state DOTs, Costco, The Home Depot, Walmart, NASA, Marriott, Boeing, Honda, Starbucks, Nordstrom, Apple, Nike, CVS, Disney, and more, trust us to continue innovating and refining our products. This has led contractors, owners, engineers and architects to choose Rapid Set and Komponent to eliminate problems they have with other concrete repair materials. They save time and money, and achieve durable, structurally-sound, and aesthetically-pleasing results.





WHEN TIME, MONEY, AND DURABILITY MATTER

The TRU® Flooring System is formulated with the technology of Rapid Set® Cement, a belitic calcium sulfoaluminate (BCSA) cement that has low shrinkage, is sulfate resistant, and has a reduced risk of alkali-silica reaction. These three combined factors make Rapid Set cement concrete extremely durable, with a potential lifetime of 80 years, more than double that of portland cement concrete.

Using Rapid Set cement-based toppings, underlayments, and repair materials helps you meet aggressive timelines, reduce costs, and achieve high-quality results. With Rapid Set cement repair materials, you can repair damaged concrete instead of tearing out and replacing floors. With the TRU polished toppings, you can produce beautiful, flat, polished floors in a fraction of the time it would take with portland cement, and at a much lower cost.

CONTRIBUTING TO A HEALTHIER PLANET, ONE FLOOR AT A TIME



Rapid Set® cement uses by-products from recycling processes as raw materials which are not removed from the ground. The production of normal portland cement emits roughly 0.9 tons of CO₂ per ton of cement. Rapid Set cement emits 32% less CO₂

than portland cement because of less fuel, lower temperatures, and less limestone being used in the production process. Since Rapid Set cement concrete lasts longer than portland cement concrete, replacement and maintenance are reduced, which means less pollution is released into the environment.

The TRU® Flooring system has been used in many facilities earning LEED Platinum, Gold, Silver, and Certified status. With millions of square feet of TRU installed, we are working to contribute to a sustainable world, one floor at a time.

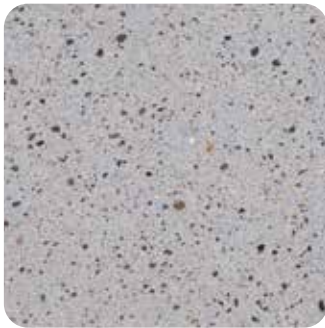


POLISHED CONCRETE

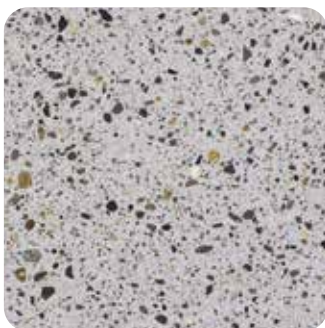
is the one of the fastest growing market segments in decorative concrete today. Over the last decade, it has become one of the most viable flooring solutions for commercial and industrial flooring. If you are an architect, designer, builder or contractor, polished Rapid Set® TRU® toppings are the smart alternative for renovations or new construction projects that require a durable, fast-track, cost effective, eco-friendly, low maintenance flooring option.



TRU Self-Leveling



TRU SP



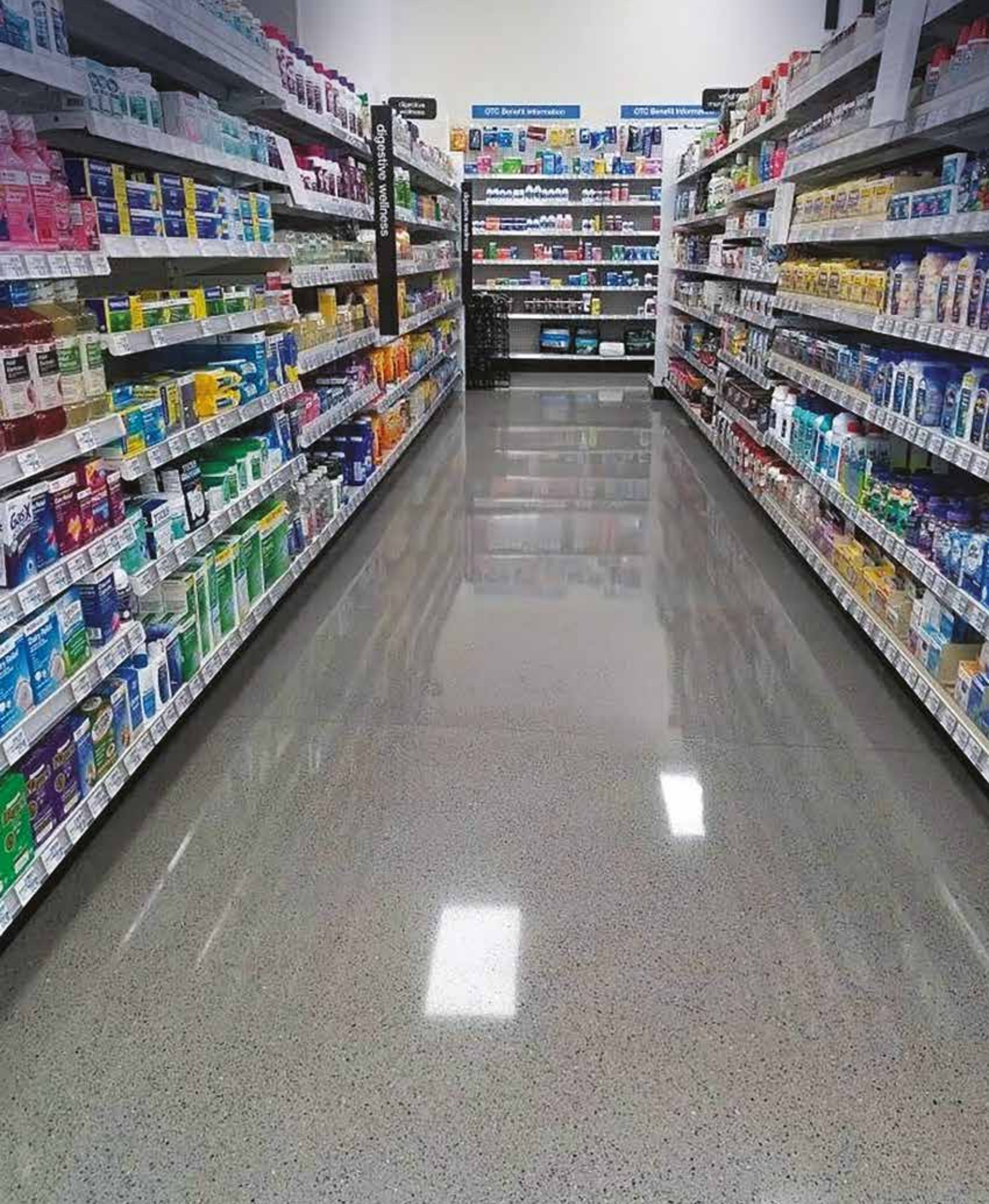
TRU PC

ADVANCED CEMENT TECHNOLOGY

CTS offers a complete line of fast-track high-strength decorative toppings, underlayments and repair materials, all formulated with our durable Rapid Set® BCSA cement technology that is built to last. TRU polished toppings are available in three different high-quality aggregate appearances, in a variety of colors and aggregate exposures that can achieve both design and performance goals.

TRU toppings are designed to be very dense and produce a high-quality polished finish that meets the slip coefficient of the polished community. Due to their high surface hardness, our polished toppings are capable of producing polished finishes with high reflectivity and excellent clarity like traditional concrete. When the level of flatness that can be gained is combined with our dense self-leveling concrete, the finished polished flooring is capable of reflecting images like a mirror, without waves or distortion. Reflections will look sharp and clear without a haze.

All TRU toppings are engineered for excellent adhesion to new (28 day old) or existing concrete substrates with long term durability. Our fast-track TRU toppings can be ground wet or dry to easily produce a uniform aggregate exposure.



ADVANTAGES



DECORATIVE

Designed specifically for polishing and decorative flooring applications



OUTSTANDING CLARITY AND GLOSS

Highly polishable due to low polymer content and high density



DESIGN OPTIONS

Customize your floors by adding aggregates and colors



FAST TRACK

Foot traffic in 2 to 3 hours, grind wet or dry, and polish in 24 hours



HIGH STRENGTH:

4,000 psi (27.6 MPa) in 24 hours, 7,000 psi (48.3 MPa) in 28 days



HIGH PERFORMANCE

Durable in dry and wet areas



POLISHED CONCRETE APPEARANCE

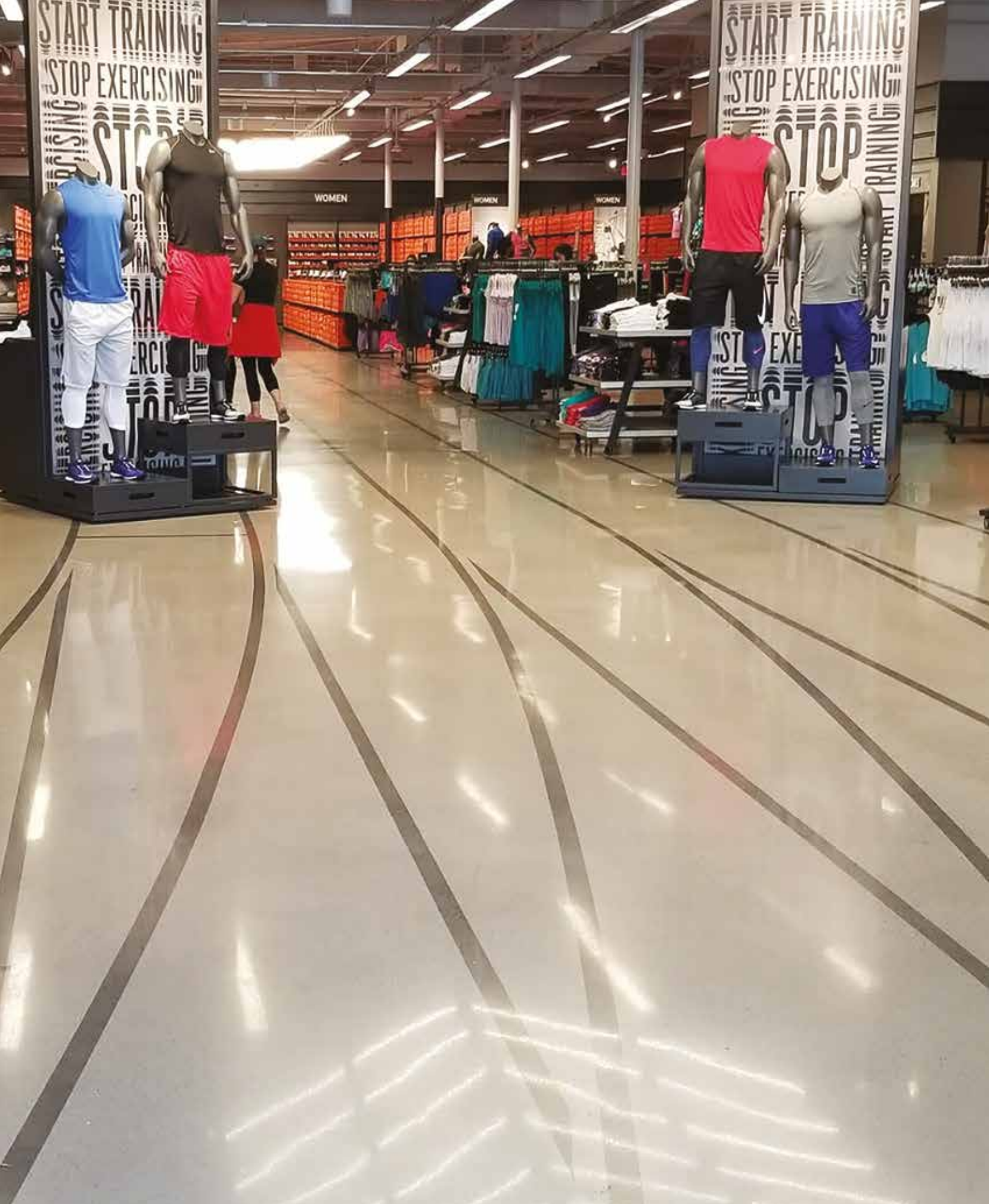
TRU is a high-flow topping that simulates polished concrete



ENVIRONMENTAL ADVANTAGES

Use to reduce your carbon footprint and lower your environmental impact



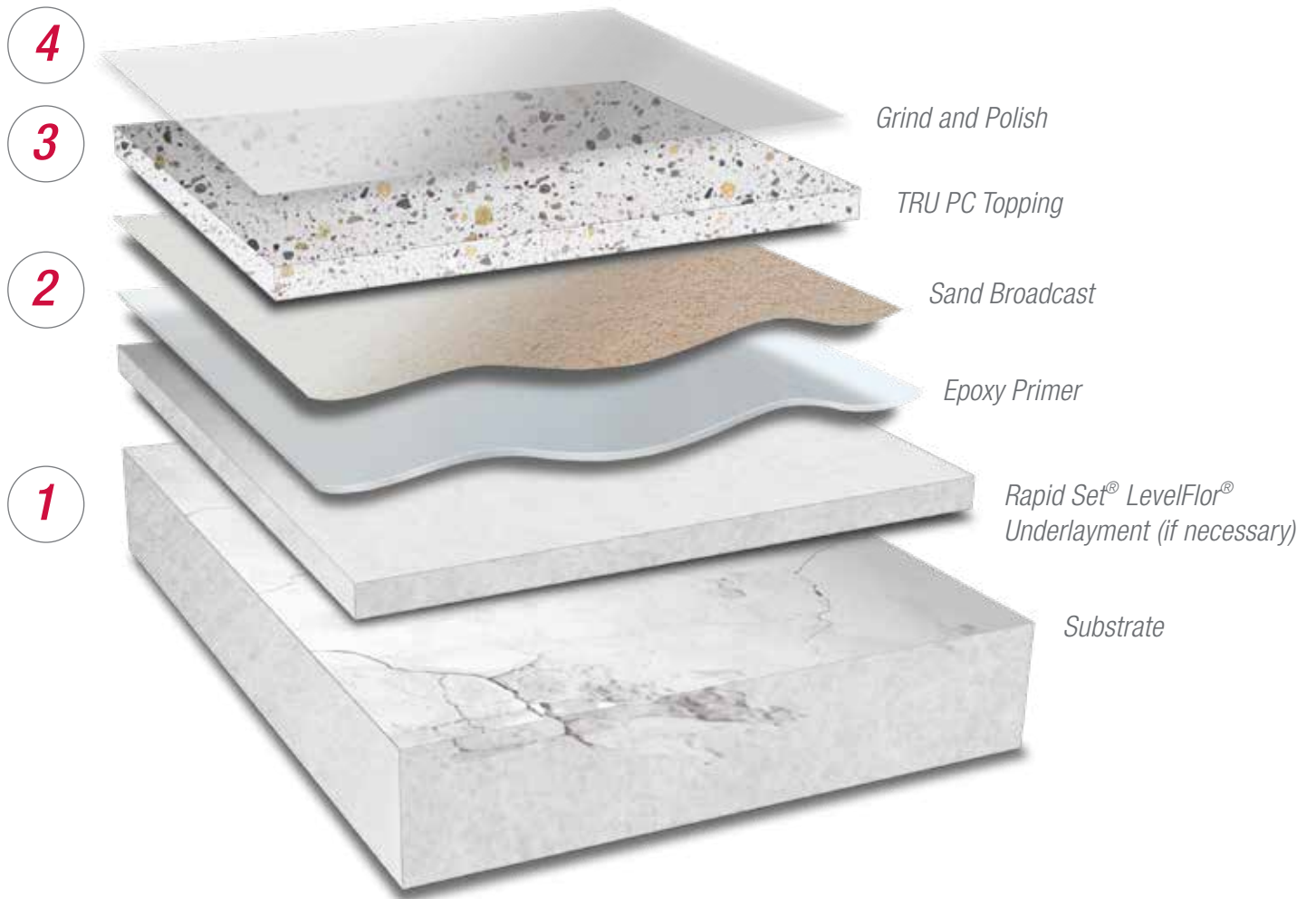


THE PROCESS

OF A TRU® SELF-LEVELING POLISHED OVERLAY

1. **PROFILE SUBSTRATE:** Mechanically prepare the surface to obtain an ICRI CSP 3 to 5
 - All joints must be honored
 - Remove all loose, unsound, contaminated material
 - Suitable substrates require a minimum 3,000 psi (20.7 MPa) and a minimum density of 100 pcf (pounds per cubic foot)
 - Fill all cracks with the appropriate crack material
2. **PRIME:** Use our alkali-resistant fast-track Rapid Set® TXP™ Epoxy Primers. Our alkali-resistant TXP Epoxy Primers offer high bond and long term performance
 - Requires 1/2 to 3/4 lbs of 20 to 30 mesh dry silica sand per square foot
 - Suitable for substrates exhibiting an RH of up to 100%
 - Cure time:
 - Rapid Set® TXP SuperFast = 2-½ to 3 hours
 - Rapid Set® TXP Fast = 4 to 6 hours
3. **MIX AND PLACEMENT:** Choose one of the Rapid Set® TRU® products
 - Minimum depth of 3/8"
 - All joints must be honored
 - Options: colorants / aggregates
 - Use appropriate mixing equipment and placement tools
4. **GRIND AND POLISH:** In 24 hours
 - Grind wet or dry





INDUSTRY LEADER

We have been in the forefront of architectural concrete floors since 2005. We have experience working on entire flooring systems with the leading manufacturers of grinding equipment, chemicals and mixing equipment. Because of our extensive experience, we have been able to revolutionize this explosive polished topping market into the commercial and industrial flooring communities.



LARGEST NETWORK OF TRAINED CONTRACTORS



BEST ON-SITE FIELD SUPPORT



CONTINUING EDUCATION – AIA SEMINARS



DESIGN AND INSTALLATION CONSULTANTS



TRU® INSTALLED WORLDWIDE

SIXTEEN YEARS IN THE INDUSTRY

Polished concrete is a skilled profession. Over the years, we have trained and partnered with some of the best flooring contractors who install polished flooring systems for customers in all industries.

2004	Began development on self-leveling underlayment and overlayment
2005	Discovered that Rapid Set® overlayment is compatible with concrete polishing techniques and equipment
2006	Introduced Rapid Set® TRU® Self-Leveling as a polishable overlayment
2009	Developed polishing system with HTC
2010	Developed polishing system with STI
	Introduced Rapid Set® TXP™ Epoxy Primer
	Rapid Set® TRU® World of Concrete - Decorative Artistry Section
2011	Developed polishing system with SASE
	Developed polishing system with Superabrasive
	First project with portable batch mixer
2013	Developed polishing system with Husqvarna
2014	Launched Rapid Set® TRU® PC
2018	Launched Rapid Set® TRU® SP

TRU[®] SELF-LEVELING

Rapid Set[®] TRU[®] Self-Leveling is a high-performance, professional-grade, hydraulic cement-based, architectural topping engineered for polishing. It is durable in wet or dry conditions. TRU Self-Leveling grinds and polishes much like concrete. It can achieve high clarity and reflectivity due to its high density and excellent surface hardness.

Since TRU has more of a cream polished appearance, it has been widely used as the matrix for custom aggregate flooring. Many flooring contractors are creative with the way they use TRU to simulate terrazzo flooring by mixing marble, stone and glass chips with TRU. The chips can vary in size and color, and by adding integral coloring with the TRU, there are numerous design possibilities.

APPEARANCE

When polished, the TRU has a uniform cream polished appearance, with slight visible aggregate exposure, like a mirror, without waves or distortion. Reflections will look sharp and clear without a haze. Available in Natural or Gray base.

All TRU toppings are engineered for excellent adhesion to new (28 day old) or existing concrete substrates with long term durability. Our fast-track TRU toppings can be ground wet or dry and easily produce a uniform aggregate exposure.



Natural 1000



Gray 2000



PRODUCT HIGHLIGHTS

- High clarity and reflectivity
- Accepts high-build coatings in 16 hours
- Accepts integral color systems
- Fast-track projects by grinding wet or dry and polishing in 24 hours
- Custom TRU®azzo style flooring



PERFORMANCE

- Compressive Strength, ASTM C109 Mod.*
- 5,000 psi (34.5 MPa) in 24 hours
- 6,500 psi (44.8 MPa) in 28 days



ENVIRONMENTS

- Commercial, institutional and recreational facilities
- High-pedestrian traffic, forklift traffic or other rubber-wheeled traffic
- Schools, airports, warehouses, retail, restaurants, lobbies, and more



CSI DIVISION CLASSIFICATIONS

- Concrete Topping 03 53 00
- Cast-in-Place Concrete 03 30 00

TRU[®] SP

SELF-LEVELING

Rapid Set[®] TRU[®] SP is a high-performance, professional-grade topping with a specialized aggregate that simulates a uniform salt and pepper appearance on polished, decorative floors. It is durable in wet or dry conditions.

APPEARANCE

When polishing, the TRU SP has a uniform visible salt and pepper aggregate appearance. Available in a natural and gray base.



Natural 4000N



Gray 4000





PRODUCT HIGHLIGHTS

- High clarity and reflectivity
- Accepts high-build coatings in 16 hours
- Accepts integral color systems
- Fast-track projects by grinding wet or dry and polishing in 24 hours



PERFORMANCE

- Compressive Strength, ASTM C109 Mod.*
- 4,000 psi (27.6 MPa) in 24 hours
- 6,500 psi (44.8 MPa) in 28 days



ENVIRONMENTS

- Commercial, institutional and recreational facilities
- High-pedestrian traffic, forklift traffic or other rubber-wheeled traffic
- Schools, airports, warehouses, retail, restaurants, lobbies, and more



CSI DIVISION CLASSIFICATIONS

- Concrete Topping 03 53 00
- Cast-in-Place Concrete 03 30 00

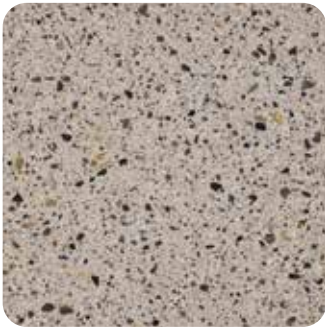
TRU[®] PC

SELF-LEVELING

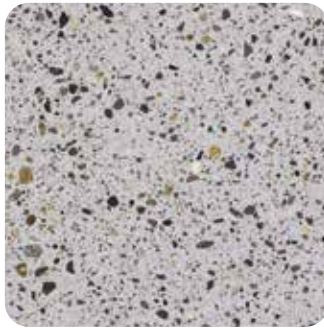
Rapid Set[®] TRU[®] PC is a high-performance topping with a specialized aggregate that simulates the appearance of polished concrete. It is durable in wet or dry conditions. TRU PC grinds and polishes much like concrete and can achieve a very high gloss and distinctness-of-image (DOI) due to its high density and excellent surface hardness.

APPEARANCE

When polishing, the TRU PC has a visible amount of aggregate exposed and has a heavy Class B exposure. Available in a natural and gray base.



Natural 3000N



Gray 3000





PRODUCT HIGHLIGHTS

- High clarity and reflectivity
- Accepts high-build coatings in 16 hours
- Accepts integral color systems
- Fast-track projects by grinding wet or dry and polishing in 24 hours



PERFORMANCE

- Compressive Strength, ASTM C109 Mod.*
- 5,000 psi (34.5 MPa) in 24 hours
- 7,000 psi (48.3 MPa) in 28 days



ENVIRONMENTS

- Commercial, institutional and recreational facilities
- High-pedestrian traffic, forklift traffic or other rubber-wheeled traffic
- Schools, airports, warehouses, retail, restaurants, lobbies, and more



CSI DIVISION CLASSIFICATIONS

- Concrete Topping 03 53 00
- Cast-in-Place Concrete 03 30 00

DECORATIVE FLOORING





MORE

FINISHED FLOORING







LET YOUR TRU[®]
CREATIVE IDEAS
SHINE IN YOUR
FLOORS



WHITE
1003



MOON ROCK
1152



SAND
1202



TRU NATURAL*
1000



TRU GRAY*
2000



TERRA COTTA
1054

TRU[®] INTEGRAL COLORS

Samples shown should be used as a guide only. Results will vary due to aggregate, finishing techniques and environmental factors. To match specific color, jobsite testing should be done. *Represents the color and aggregate load from the bag with no additional colorants and/or aggregates. For more customized samples, colors, specifications, questions, or jobsite support, contact **800-929-3030** or info@ctscement.com.



SADDLE BROWN
1064



EMERALD
1222



PLATINUM
1171



SLATE
1172



CHOCOLATE
1064



VIOLET
1142



CHARCOAL
1174



BLACK
1162



GOLD
1092



ROYAL BLUE
1122



BURNT SIENNA
1024



WALNUT
1234



YELLOW
1102



SCARLET
1112



OLIVE GREEN
1192

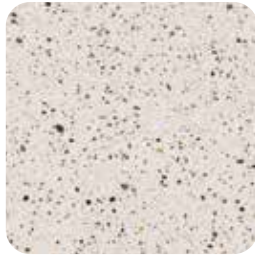


CAPPUCCINO
1254

TRU[®] SP COLORS



TRU SP NATURAL*
4000N



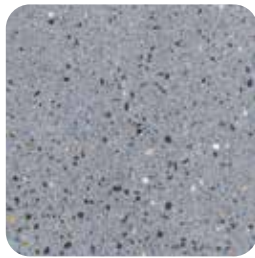
IVORY
4003N



GRAY MIST
4014N



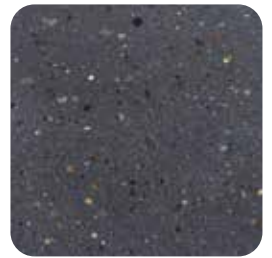
CLOUD
4001



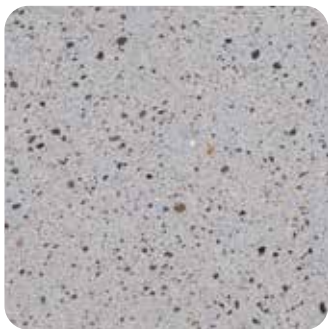
FRENCH GRAY
4261



GRAY ASH
4172

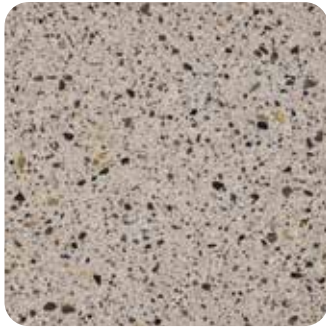


EBONY
4162

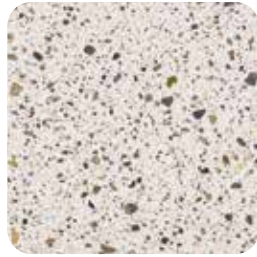


TRU SP GRAY*
4000

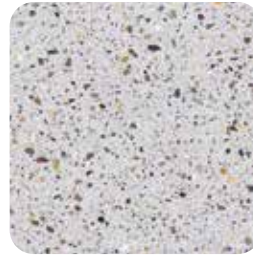
TRU[®] PC COLORS



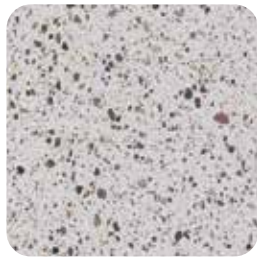
TRU PC NATURAL*
3000N



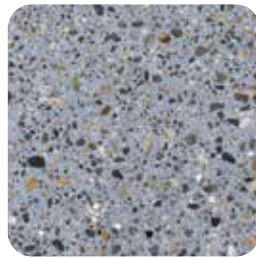
IVORY
3003N



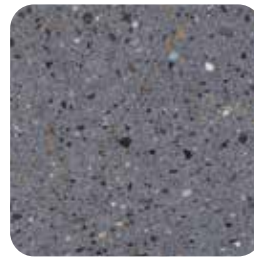
GRAY MIST
3014N



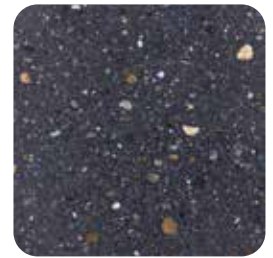
CLOUD
3001



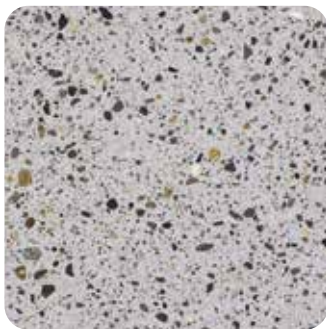
FRENCH GRAY
3261



GRAY ASH
3172



EBONY
3162



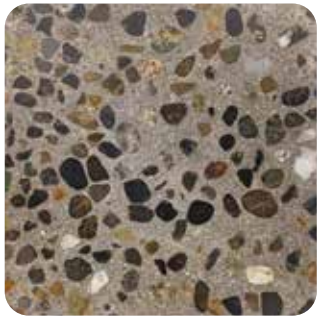
TRU PC GRAY*
3000

Samples shown should be used as a guide only. Results will vary due to aggregate, finishing techniques and environmental factors. To match specific color, jobsite testing should be done. *Represents the color and aggregate load from the bag with no additional colorants and/or aggregates. Custom colors are available. For more customized samples, colors, specifications, questions, or jobsite support, contact **800-929-3030** or **info@ctscement.com**.

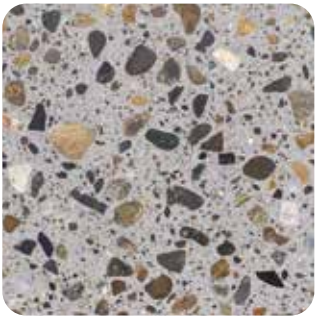
CUSTOMIZE THE LOOK OF YOUR FLOOR

Add colors and aggregates to any of our TRU® Architectural Topping products for a unique customized look.

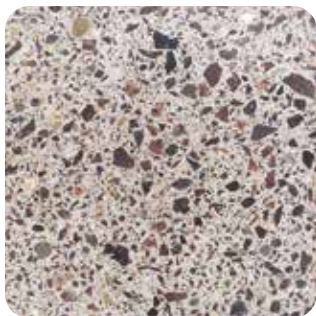
TRU[®]AZZO



TRU SL
GRAY | **1/4"
TRU AGG** | 2007



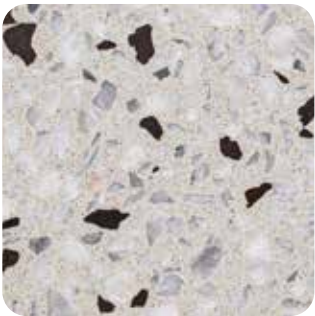
TRU PC
GRAY | **1/4"
TRU AGG** | 3007



TRU PC
GRAY | **TRAP
ROCK** | 3400
Heavy duty wear resistance



TRU SL
GRAY | **MARBLE
BLEND** | 2300



TRU SL
NATURAL | **GLASS
BLEND** | 5021



TRU SL
NATURAL | **GLASS
BLEND** | 5019



TRU SL
NATURAL | **MOTHER
OF PEARL** | 5011



TRU SL
NATURAL | **MOTHER
OF PEARL** | 5009

Samples shown should be used as a guide only. Results will vary due to aggregate, finishing techniques and environmental factors. To match specific color, jobsite testing should be done. For more customized samples, colors, specifications, questions, or jobsite support, contact **800-929-3030** or **info@ctscement.com**.

SPIKED ROLLERS

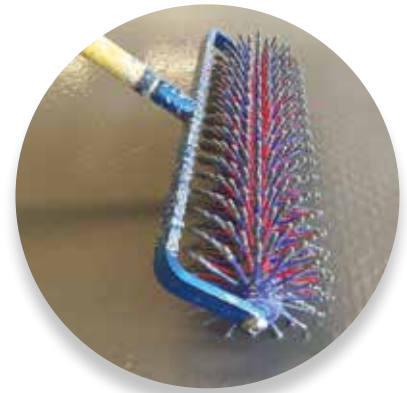
TWO SPECIALTY FINISHING ROLLERS FOR SELF-LEVELING OVERLAYS

- Releases trapped air that is produced during mixing
- Significantly reduces pinholes
- Produces a flatter floor than conventional tooling
- Threaded handle adapter
- Easy to clean

TRU® PC SPIKED ROLLER

Designed for Rapid Set® TRU® PC Polished Concrete to improve the consistency of the aggregate appearance at the surface. Also ideal for Rapid Set® LevelFlor® pre-leveling fills up to 1- $\frac{3}{4}$ ".

- 18" wide finishing roller
- 2" polypropylene spikes with $\frac{1}{2}$ " space between spikes
- Heavy-duty aluminum frame
- High-grade stainless steel hardware
- Acts as a leveling tool without pushing down the aggregate



TRU® SELF-LEVELING SPIKED ROLLER

Designed for use with Rapid Set TRU Self-Leveling, TRU SP, and LevelFlor. Closely spaced spikes are more effective at releasing trapped air in these fine aggregate self-leveling products without leaving a pattern in the finished surface.

- 24" wide finishing roller
- 1- $\frac{1}{4}$ " long, $\frac{1}{64}$ " super thin stainless steel spikes
- Easily place up to $\frac{1}{2}$ " deep pours
- Removes rake lines, assists leveling, and improves uniformity of the finished floor







REPAIR MATERIALS FOR CONCRETE FLOORS

Rapid Set® offers a full line of concrete repair products to fix cracks and surface imperfections, level or raise the elevation of existing concrete substrates, and provide a sound surface for finished flooring.

Rapid Set® Mortar Mix Plus (MMP) being used.



UNDERLAYMENTS

LEVELFLOR®

Self-Leveling Underlayment

Rapid Set® LevelFlor® is an advanced hydraulic cement-based self-leveling underlayment that can be used both indoors and outdoors. It produces a flat, strong surface with high bond strength. LevelFlor is designed for fast track leveling applications.

Use LevelFlor when a high quality, fast-setting, self-leveling underlayment is needed. LevelFlor is ideal for all floor projects that need long flow life and working time while achieving high 24-hour strength. LevelFlor is an excellent choice for new floor projects and repair projects.



Product Highlights

- High performance
 - Formulated with Rapid Set hydraulic cement
 - Provides long-life durability in wet and dry environments
- Fast setting
 - Minimizes downtime
 - Ready for foot traffic in 2 to 4 hours
 - Ready for TXP Fast or TXP SuperFast Primer in 16 hours
 - May be used as a temporary work surface prior to installation of finished flooring
 - Ceramic tile flooring may be placed in as little as 4 hours

Performance

- Tested in accordance with ASTM C1708
- 3,000 psi (20.7 MPa) in 24 hours
- 5,000 psi (34.5 MPa) in 28 days

Environments

- Commercial, institutional and recreational facilities
- High-pedestrian traffic, forklift traffic or other rubber-wheeled traffic
- Schools, airports, warehouses, retail, restaurants, lobbies, and more





SKIM FLOOR

Trowel-Grade Patching, Floor Skimming and Underlayment

Rapid Set® Skim Floor is a smooth, fast curing, sand-free, hydraulic cement-based floor underlayment. Use under flooring for patching and skim coating on interior and exterior projects.

Use Skim Floor to repair, level and smooth concrete surfaces, quarry tile, or APA rated interior-grade plywood prior to the installation of floor coverings such as VCT, sheet vinyl, carpet, tile, pavers, and other protective toppings.



Product Highlights

- Excellent bond: Bonds to concrete, plywood, brick, block and more
- Versatile: Apply featheredge to 1" (2.5 cm)
- Great workability: Easy to apply, 30 to 40 minute working time
- Initial set time: 50 minutes
- Fast setting: Walk on in 1 to 3 hours
- Interior/Exterior: Mold and mildew resistant
- Easy to use: Just add water; no primer or curing compound required

Environments

- Commercial, institutional and recreational facilities
- High-pedestrian traffic, forklift traffic or other rubber-wheeled traffic
- Schools, airports, warehouses, retail, restaurants, lobbies, and more

PRIMERS

SEAL CONCRETE AND INCREASE ADHESION

Rapid Set's high-performance acrylic and epoxy primers are easy to apply and have no VOCs. Use these primers to seal porous concrete and improve the adhesion of Rapid Set® Self-Leveling Flooring Products and TRU® polished toppings to the substrate.



FAST CURE, 100% SOLIDS, TWO-COMPONENT, ALKALI RESISTANT EPOXY PRIMER

- Ready for overlayment in 4 to 6 hours
- High bond strength: Excellent adhesion to concrete
- Seals concrete, minimizes pinholes in overlayment
- Low viscosity, deep penetrating
- Low odor, no VOC
- For substrates up to 100% RH
- Color: White



SUPER FAST CURE, 100% SOLIDS, TWO-COMPONENT, ALKALI RESISTANT EPOXY PRIMER

- Ready for overlayment in as little as 2.5 hours
- High bond strength: Excellent adhesion to concrete
- Seals concrete, minimizes pinholes in overlayment
- Low viscosity, deep penetrating
- Low odor, no VOC
- For substrates up to 100% RH
- Color: Yellow



HIGH-ADHESION ACRYLIC PRIMER

- Seals porous concrete to prevent pinholes
- Improves adhesion
- Concentrated formula
- Low odor, no VOC
- Extend with water
- Accepts Rapid Set® LevelFlor® in 1 to 24 hours



TROWEL-GRADE REPAIR MATERIALS

CONCRETE FOR PRESERVING, RESTORING, AND
RECONSTRUCTING BUILDINGS AND STRUCTURES

It is essential to repair and restore concrete structures due to the deterioration of the embedded reinforcing, which results in cracking and spalling of the concrete. Rapid Set® provides a full line of cementitious products for vertical, overhead, and horizontal repairs and restoration.



HIGH-STRENGTH POLYMER-MODIFIED STRUCTURAL REPAIR MORTAR

- Apply from 1/2" to 6" thick
- Ready for TXP Fast or TXP SuperFast Primer in just 3 hours
- Polymer modified: Excellent workability, and strong adhesion
- Rapid hardening: High early strength with ample working time
- Ready for self-leveling toppings in 16 hours
- Gray color: Formulated to a concrete gray color
- Corrosion resistance: Integral corrosion inhibitor
- Freeze-thaw resistance
- Air entrained



MULTI-PURPOSE REPAIR MATERIAL & NON-SHRINK GROUT

- Apply up to 4" thick
- Ready for TXP Fast or TXP SuperFast Primer in just 3 hours
- Fast: Sets in 15 minutes, structural strength in 1 hour
- Ready for self-leveling toppings in 16 hours
- Durable: Formulated for long life in critical applications
- Excellent bond: Superior adhesion to concrete, stone, brick, block, stucco and more
- Structural: For repair and new construction
- Multi-purpose: Use for concrete repair, grouting, anchoring, casting, underlayment and more



HIGH-STRENGTH STRUCTURAL REPAIR MORTAR

- Apply from 1/2" to 6" thick
- Ready for TXP Fast or TXP SuperFast Primer in just 3 hours
- Fast: Sets in 15 minutes, structural strength in 1 hour
- Ready for self-leveling toppings in 16 hours
- Structural: For repair and new construction
- Multi-purpose: Use for concrete repairs, wall repairs, stucco repairs, one-coat exterior plaster, underlayments, floors, formed work, and more



VERY RAPID HARDENING CONCRETE

- Apply from 2" to 24" thick
- Ready for TXP Fast or TXP SuperFast Primer in just 3 hours
- Fast: Sets in 15 minutes, structural strength in 1 hour
- Ready for self-leveling toppings in 16 hours
- Durable: Formulated for long life in critical applications
- Structural: For repair and new construction
- Multi-purpose: Use for concrete repair, formed work, setting posts, footings, floors, machine bases, and more

TESTIMONIALS



How well does SASE work with the Rapid Set TRU® polished overlayment system?

SASE's equipment, diamond tooling (Xenith Pads), densifiers and protective products are perfect complements to Rapid Set TRU, TRU PC and TRU SP. SASE has developed a complete system from start to finish for the grinding and polishing of all TRU Products that work every time with absolute success. This same system has been used to consistently achieve positive results for over 10 years.

What difference do you see in polishing TRU overlayments vs. polishing traditional concrete?

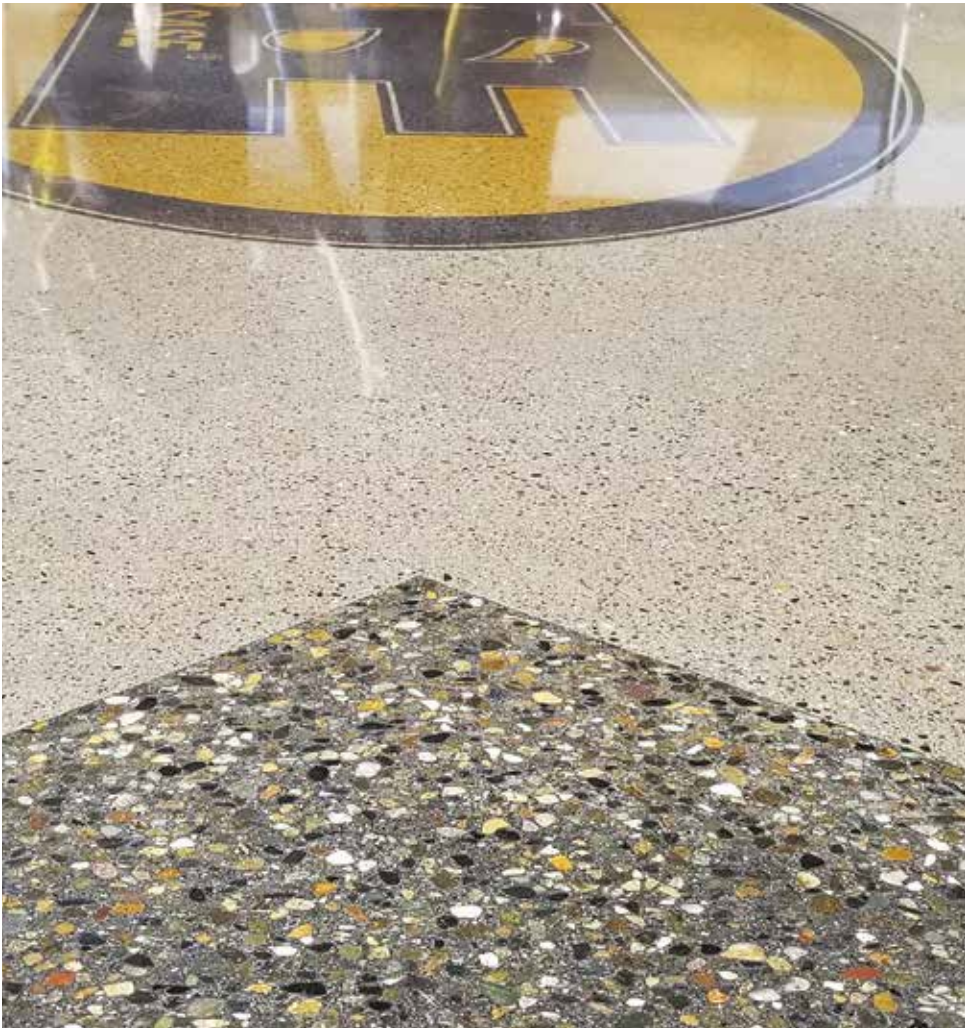
Grinding and polishing Rapid Set TRU Products vs. traditional concrete can be summed up in one word, CONSISTENCY. While concrete across North America and anywhere in the world reacts very differently to diamond tooling resulting from variations in locally available aggregates and raw materials, TRU Products are consistent no matter where they are installed. This makes it easier for contractors and installers to successfully place and polish TRU Products every time.

Anything else you'd like to share?

SASE and Rapid Set share a common philosophy of knowledgeable "boots on the ground" technical staff supporting end users in the field to ensure success. We work together on jobsites to ensure positive results for our contractors and customers.

- Marcus Turek
Vice President of Sales







How well does Ameripolish work with the Rapid Set® TRU® polished overlayment system?

Ameripolish's overlayment colorant and protective chemical system was designed specifically for the Rapid Set TRU polishable overlayment system.

What difference do you see in polishing TRU overlayments vs. polishing traditional concrete?

The Rapid Set TRU Products are typically much easier to work with from a chemical standpoint due to the consistency of materials.

Anything else you'd like to share?

The Rapid Set technical support team is very knowledgeable, responsive, and service-oriented. Because of my architectural background, I can fully appreciate the value of working with Rapid Set who provides high-quality materials backed by a readily-available technical support team.



Owen P. Meyer
AIA, NCARB | VP-Professional Services





**HTC
Professional
Floor Systems**



How well does HTC work with the Rapid Set® TRU® polished overlayment system?

The HTC overlay polished system in conjunction with Rapid Set is a winning combination. HTC was the first company in the industry to specifically design tooling to polish cementitious overlay material. Since the launch of Fenix pads in 2008, the development and improvement of the polishing process has continuously improved. Today HTC and Husqvarna Overlay systems create a consistent and simple process to achieve great Gloss and DOI values to the Rapid Set TRU family of products.

What difference do you see in polishing TRU overlayments vs. polishing traditional concrete?

Whenever our team is on a project that has Rapid Set overlayment installed, we know the consistency and uniform look many floor owners require will be much easier to achieve. Creating happy floor owners is a value to our team and the polished concrete industry.

Anything else you'd like to share?

Watching the development of Rapid Set TRU (PC specifically) over the years has been a game changer for our industry. The 3 largest values when using the TRU family of products over traditional concrete are: (1) teaching contractors consistent steps through the polishing process; (2) giving architects obtainable deliverables; (3) and producing a floor with consistent aggregate exposure.



Ryan McBride
Business Development National Projects



How well do Smartfloor products work with the Rapid Set® TRU® polished overlayment system?

As distributors, we are in a very fortunate position of being able to supply a broad range of products that work in perfect harmony with the Rapid Set TRU polishable overlayment system.

What difference do you see in polishing TRU overlayments vs. polishing traditional concrete?

The density and consistency of the TRU overlay material enables faster processing wet or dry. The beauty of an overlay of this type is you know what you're going to get, time after time! The very low polymer content also guarantees a great gloss and DOI level.

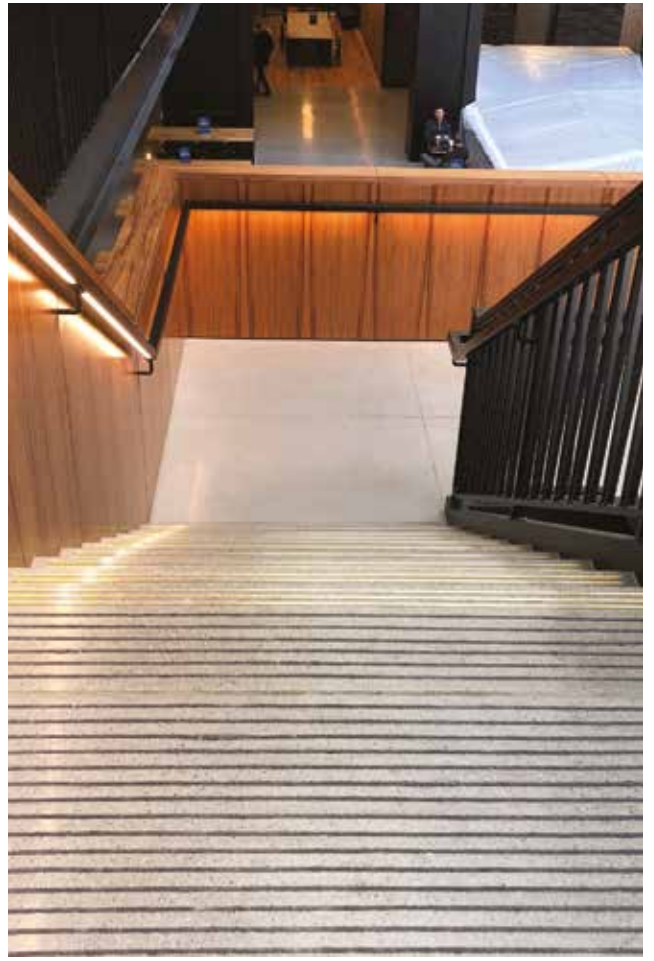
Anything else you'd like to share?

Having worked with CTS for a number of years now, we simply wouldn't promote any other overlay within our portfolio. We know we can rely on the product as well as have an innovative partner to work with and call upon when needed.



David Shipp
Technical Director – Smartfloor UK Ltd





SOME CLIENTS WE'VE FLOORED

Retail

99 Cent Store
Alexander McQueen
American Eagle
American Outfitters
Amina Rubinacci
ASICS
Balenciaga
Banana Republic
Bauer Skate
Brooklyn Navy Yard
Burlington Coat Factory
Coach Mens Factory
Columbia Care Dispensary
Conn's HomePlus
CVS Pharmacy
Dollar Tree
Finish Line
Fit 2 Run
Five Below
Foot Locker
Forever 21
Hermès
Hollister
Hot Tropic
Indochino
J.C. Penney
Just Cavali
Leslie Pool
Lululemon
Lush
Mapco
MedMen Dispensary
MLB – Major League Baseball
Michaels
Nike
Nordstrom
Nordstrom Rack
Off Broadway Shoes

Old Navy
OndadeMar
O'Reilly Auto Parts
Original Penguin
Perry Ellis
Pet Pantry
PetSmart
Salt Life Clothing
Skechers
Target
TravisMathew
Tory Burch
Under Armour
Walgreens
WSS – Wholesale Shoe Store
Valli & Valli
The Void
Zadig & Voltaire

Box Store

Costco
Floor & Décor
Home Depot
Sam's Club
Walmart

Grocery Stores

Giant Grocery Store
Gordon Food Store
Green Wise
Grocery Outlet
Hi-Lo Grocery
Lidl
Smart & Final
Sprouts
Stew Leonard's
Stop & Shop
Whole Foods

Stadium/Arena

Bryant-Denny Stadium
Florida State University
Doak Campbell Stadium
State Farm Arena
University of Cincinnati
Nippert Stadium
West End Stadium

Government

American Air Force
Exchange Services
Fort Bragg Air Force Base
Fort Carson Air Force Base
Long Beach Fire House
Maxwell Air Force Base
NASA Robotic Technology Park

Medical

St. Petersburg General Hospital
Trinity Hospital

Hair Salon

Red Market Salon

Hotel

A Loft
Breakers
ECO Apartments
Hyatt – Cook County
Hyatt – Thompson Washington, D.C.
Marriott

Museums

Corning Museum of Glass
Norton Museum of Art

Offices

Amazon
Apple
Alcatel-Lucent
Boeing
CAT
Comcast
Consolidated Labels
Fanatics
Frost Bank Tower
Google
Gucci
Honda – Puerto Rico
Marc Fisher Shoes
Media Arts Office
MetLife
National Instruments
NBA – National Basketball Association
NHL – National Hockey League
Willis Tower

Restaurant

California Pizza Kitchen
Chipotle
Doc Ford's
High Five Yogurt
Krispy Kreme
Starbucks
Taverna Opa
Wahlburgers

Jewelry Store

Misaki Jewelry

Observation Deck

The Observation Deck
at CEB Tower

School/University

Fellsmere Boys School
Lane Community College
Seton High School
St. Petersburg Beach College
Texas A&M University
University of South Florida



International

Box Store

Costco – Beitou Taiwan

Church

Cathedral– Seoul Korea
Oakridge Lutheran Church

Retail

Yves Saint Laurent – Thailand

Office

Descente Innovation Complex
– South Korea

Residential

Bahia Kino – Mexico Residence

School/University

University of British Columbia
– Vancouver, Canada

Theme Park

Warner Brothers World Abu Dhabi
– United Arab Emirates



HANDS-ON TRAINING

The Rapid Set® TRU® Flooring System has been used in many facilities earning LEED Platinum, Gold, Silver, and Certified status. With millions of square feet of TRU installed, we are working on contributing to a more sustainable world, one floor at a time.

Our experts are skilled and experienced as former flooring contractors. They are on the forefront of architectural concrete floors, and know what contractors need to do to achieve the high quality, beautiful results you desire. Contractors who follow our flooring system have the highest rate of success.

TRU has the largest preferred network of polishing contractors (and growing) ready to bring your vision to reality.

We are experienced in working on entire flooring systems with other manufacturers' equipment, tools and materials. This along with continuing education on the latest equipment, chemicals and trends, has made us the experts in the concrete flooring industry.





INTERNATIONAL
CONCRETE REPAIR
INSTITUTE



RESOURCES

Additional resources on the most up-to-date Rapid Set® TRU® documents, projects, courses, training, and more.



Receive Continuing Education Units (CEUs)

by taking the Polished Concrete Overlayments Course at CTScement.com.

www.ctscement.com/resources/professional/cecourses



Rapid Set TRU Microsite and Installation Guide

www.ctscement.com/media/tru/



Trade Shows and Events

www.ctscement.com/resources/professional/tradeshows





CTS Cement Manufacturing Corp. ▪ 12442 Knott Street, Garden Grove, CA 92841
CTScement.com ▪ 1-800-929-3030

© 2023 CTS Cement Mfg. Corp. BR_017_EN_060723A